
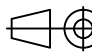
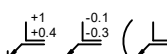



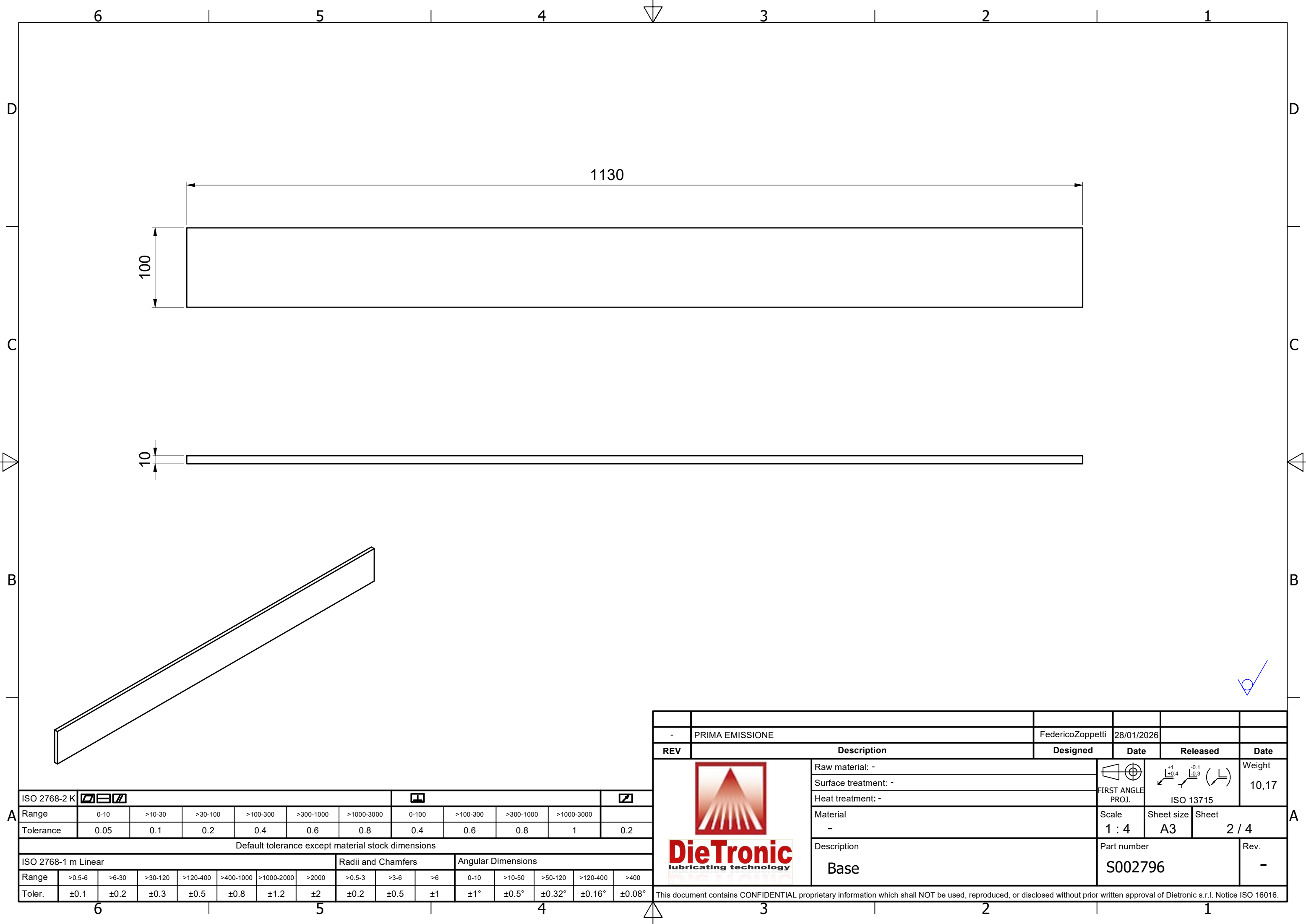


3	S001153	Plate 100x12 L=100	1	Piatto trafilato 100x12 h11	1.0037 - Acciaio S235JR	0,94	
2	S001152	Plate 60x20 L=100	1	Piatto trafilato 60x20 h11	1.0037 - Acciaio S235JR	0,94	
1	S002796	Base	1	Piatto trafilato 100x10 h11	1.0037 - Acciaio S235JR	8,87	
Pos.	Part number	Description	Q.ty	Raw material	Material	Weight	
BOM							
-	PRIMA EMISSIONE			FedericoZoppetti	28/01/2026		
REV	Description			Designed	Date	Released	Date
 DieTronic lubricating technology	Raw material: -			 FIRST ANGLE PROJ. ISO 13715		Weight	10,17
	Surface treatment: -						
	Heat treatment: -						
	Material			Scale	Sheet size	Sheet	
	-			1 : 3	A2	1 / 4	
Description			Part number		Rev.		
Rails Spacer Delta=1050mm			5302919		-		
This document contains CONFIDENTIAL proprietary information which shall NOT be used, reproduced, or disclosed without prior written approval of Dietronic s.r.l. Notice ISO 16016.							

ISO 2768-2 K																	
Range	0-10	>10-30	>30-100	>100-300	>300-1000	>1000-3000	0-100	>100-300	>300-1000	>1000-3000							
Tolerance	0.05	0.1	0.2	0.4	0.6	0.8	0.4	0.6	0.8	1	0.2						
Default tolerance except material stock dimensions																	
ISO 2768-1 m Linear							Radii and Chamfers			Angular Dimensions							
Range	>0.5-6	>6-30	>30-120	>120-400	>400-1000	>1000-2000	>2000	>0.5-3	>3-6	>6	0-10	>10-50	>50-120	>120-400	>400		
Toler.	±0.1	±0.2	±0.3	±0.5	±0.8	±1.2	±2	±0.2	±0.5	±1	±1°	±0.5°	±0.32°	±0.16°	±0.08°		



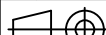

This document contains CONFIDENTIAL proprietary information which shall NOT be used, reproduced, or disclosed without prior written approval of Dietronic s.r.l. Notice ISO 16016.

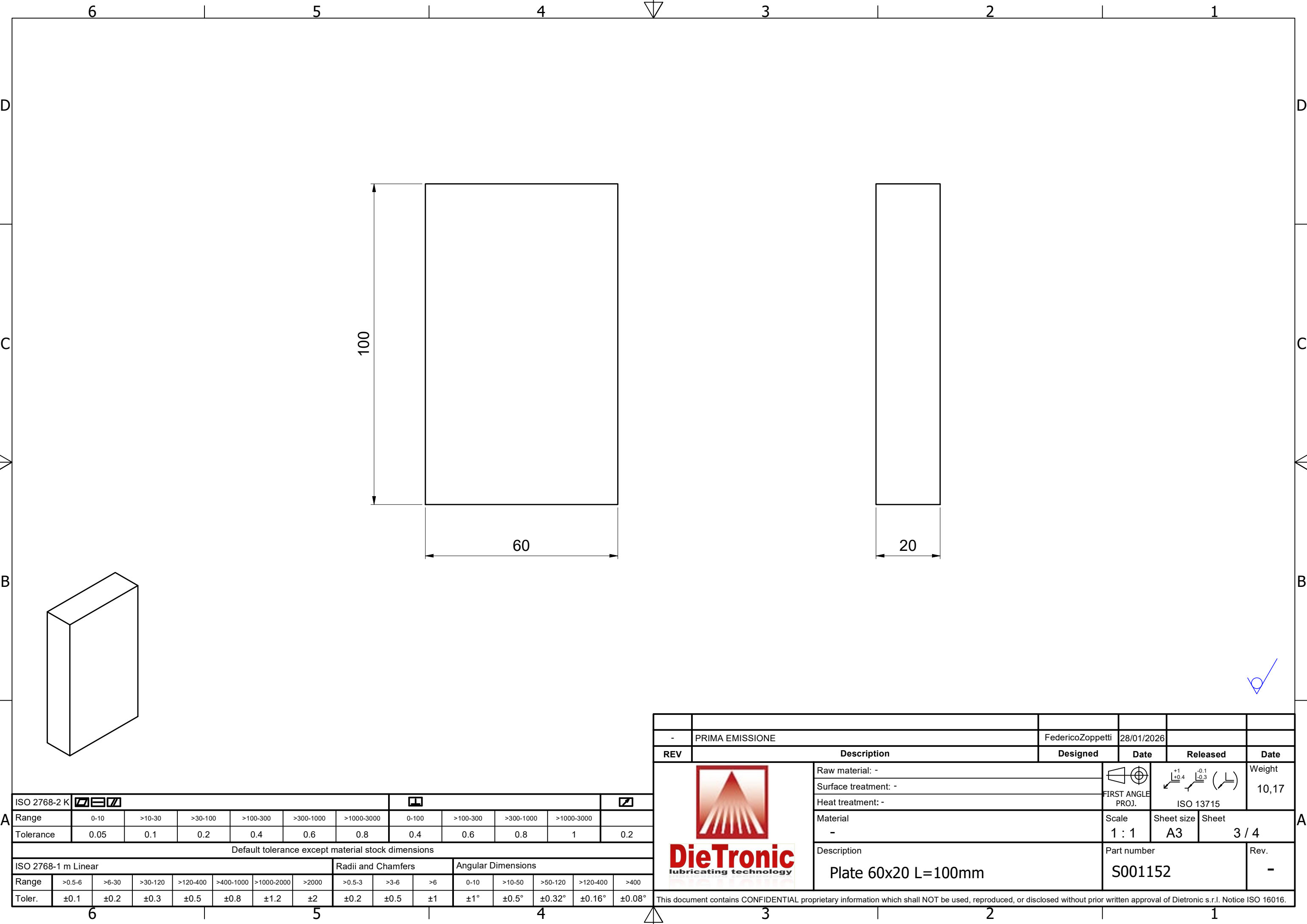


A

A




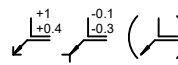
ISO 2768-2 K															
Range	0-10	>10-30	>30-100	>100-300	>300-1000	>1000-3000	0-100	>100-300	>300-1000	>1000-3000					
Tolerance	0.05	0.1	0.2	0.4	0.6	0.8	0.4	0.6	0.8	1	0.2				
Default tolerance except material stock dimensions															
ISO 2768-1 m Linear							Radii and Chamfers			Angular Dimensions					
Range	>0.5-6	>6-30	>30-120	>120-400	>400-1000	>1000-2000	>2000	>0.5-3	>3-6	>6	0-10	>10-50	>50-120	>120-400	>400
Toler.	±0.1	±0.2	±0.3	±0.5	±0.8	±1.2	±2	±0.2	±0.5	±1	±1°	±0.5°	±0.32°	±0.16°	±0.08°

-	PRIMA EMISSIONE	FedericoZoppetti	28/01/2026		
REV	Description	Designed	Date	Released	Date
 	Raw material: -	 FIRST ANGLE PROJ.	 ISO 13715	Weight 10,17	
	Surface treatment: -				
	Heat treatment: -				
	Material -	Scale 1 : 4	Sheet size A3	Sheet 2 / 4	
	Description Base	Part number S002796		Rev. -	
This document contains CONFIDENTIAL proprietary information which shall NOT be used, reproduced, or disclosed without prior written approval of Dietronic s.r.l. Notice ISO 16016.					



A

ISO 2768-2 K															
Range	0-10	>10-30	>30-100	>100-300	>300-1000	>1000-3000	0-100	>100-300	>300-1000	>1000-3000					
Tolerance	0.05	0.1	0.2	0.4	0.6	0.8	0.4	0.6	0.8	1	0.2				
Default tolerance except material stock dimensions															
ISO 2768-1 m Linear							Radii and Chamfers			Angular Dimensions					
Range	>0.5-6	>6-30	>30-120	>120-400	>400-1000	>1000-2000	>2000	>0.5-3	>3-6	>6	0-10	>10-50	>50-120	>120-400	>400
Toler.	±0.1	±0.2	±0.3	±0.5	±0.8	±1.2	±2	±0.2	±0.5	±1	±1°	±0.5°	±0.32°	±0.16°	±0.08°

-	PRIMA EMISSIONE	FedericoZoppetti	28/01/2026			
REV	Description	Designed	Date	Released	Date	
 		Raw material: -	 FIRST ANGLE PROJ.	 ISO 13715	Weight 10,17	
		Surface treatment: -				
		Heat treatment: -				
		Material -	Scale 1 : 1	Sheet size A3	Sheet 3 / 4	A
		Description Plate 60x20 L=100mm	Part number S001152		Rev. -	
This document contains CONFIDENTIAL proprietary information which shall NOT be used, reproduced, or disclosed without prior written approval of Dietronic s.r.l. Notice ISO 16016.						

