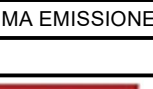



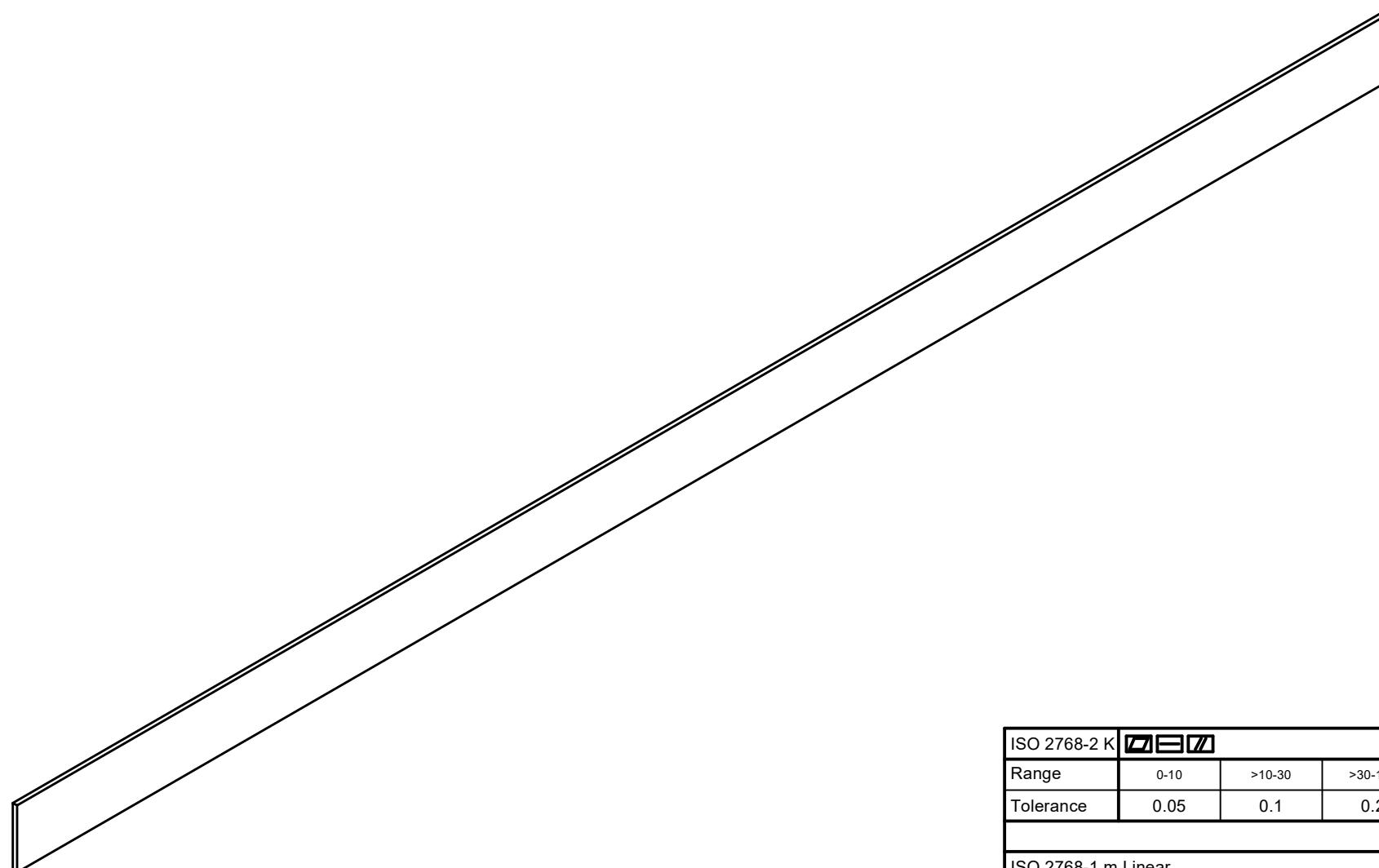
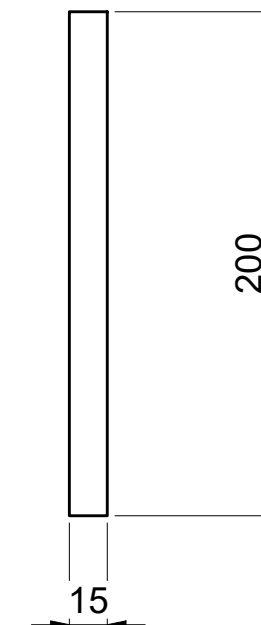
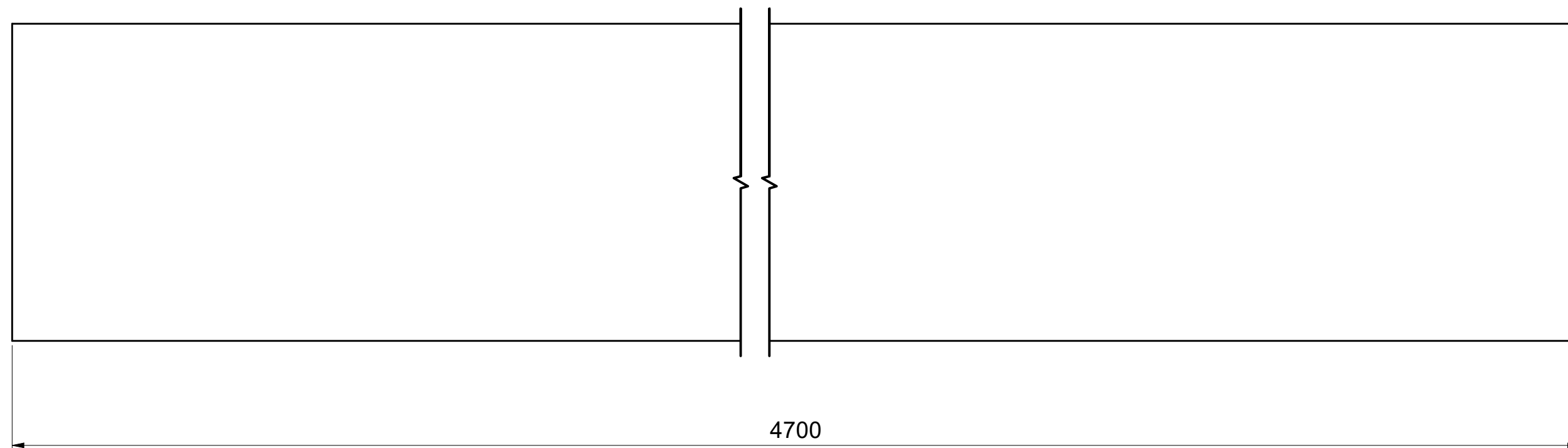
|  |                      |                     |   |            |                         |        |        |
|--|----------------------|---------------------|---|------------|-------------------------|--------|--------|
| 2  | S001149              | Plate 60x90 L=4770  | Platto laminato 60x90   | 1          | 1.0037 - Acciaio S235JR | 89.83  |        |
| 1  | S001146              | Plate 200x15 L=4700 | Platto laminato 200x15  | 1          | 1.0037 - Acciaio S235JR | 110.69 |        |
| Pos.   | Part number          | Description         | Raw material  | Qty        | Material                | Weight |        |
| BOM  |                      |                     |   |            |                         |        |        |
| PRIMA EMISSIONE  |                      |                     |   |            |                         |        |        |
| REV  | Description          |                     | Designed  | Date       | Released                | Date   |        |
| <br><b>DieTronic</b><br>transforming technology | Raw material: -      |                     |  |            |                         |        |        |
|  | Surface treatment: - |                     |   |            |                         |        |        |
|  | Heat treatment: -    |                     |   |            |                         |        |        |
|  | Material: -          |                     | Scale   | Sheet size | Sheet                   | Weight |        |
|  | 1 : 15               |                     | A0  | 1 : 15     | A0                      | 1 / 3  | 209.89 |
|  | Description          |                     | Part number   |            |                         |        |        |
|  | Rail DX              |                     | 5300849   |            |                         |        |        |
|  | Rev.                 |                     | -   |            |                         |        |        |

This document contains CONFIDENTIAL proprietary information that shall NOT be used, reproduced, or disclosed without prior written approval of DieTronic s.r.l. Notice 002 10/2016

|  |      |       |        |        |        |        |        |        |        |        |        |
|--|------|-------|--------|--------|--------|--------|--------|--------|--------|--------|--------|
| ISO 2768-2 H                                       |      |       |        |        |        |        |        |        |        |        |        |
| Range  | 0.10 | >0.10 | >0.10  | >0.10  | >0.10  | >0.10  | >0.10  | >0.10  | >0.10  | >0.10  | >0.10  |
| Tolerance  | 0.05 | 0.1   | 0.2    | 0.4    | 0.6    | 0.8    | 0.4    | 0.6    | 0.8    | 1      | 0.2    |
| Default tolerance except material stock dimensions |      |       |        |        |        |        |        |        |        |        |        |
| ISO 2768-1 m Linear                                |      |       |        |        |        |        |        |        |        |        |        |
| Range  | >0.4 | >0.4  | >0.100 | >0.100 | >0.100 | >0.100 | >0.100 | >0.100 | >0.100 | >0.100 | >0.100 |
| Toler.   | +0.1 | +0.2  | +0.3   | +0.5   | +0.8   | +1.2   | +2     | +0.2   | +0.5   | +1     | +0.2   |
| Default tolerance except material stock dimensions |      |       |        |        |        |        |        |        |        |        |        |
| ISO 2768-1 m Linear                                |      |       |        |        |        |        |        |        |        |        |        |
| Range  | >0.4 | >0.4  | >0.100 | >0.100 | >0.100 | >0.100 | >0.100 | >0.100 | >0.100 | >0.100 | >0.100 |
| Toler.   | +0.1 | +0.2  | +0.3   | +0.5   | +0.8   | +1.2   | +2     | +0.2   | +0.5   | +1     | +0.2   |

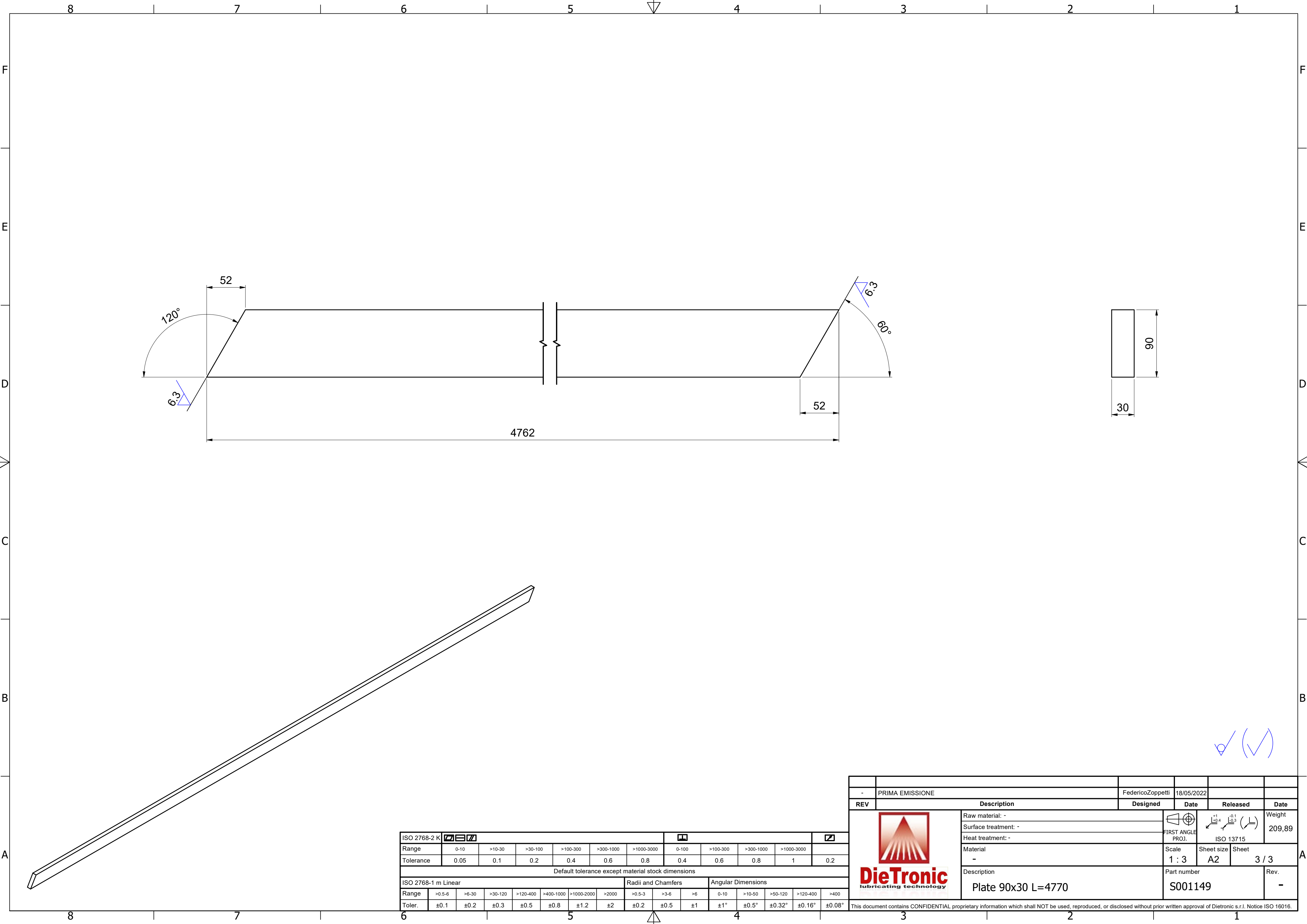


This document contains CONFIDENTIAL proprietary information which shall NOT be used, reproduced, or disclosed without prior written approval of DieTronic s.r.l. Notice ISO 16016



|  |        |       |         |          |           |            |                    |        |          |                    |            |        |         |          |        |  |
|--|--------|-------|---------|----------|-----------|------------|--------------------|--------|----------|--------------------|------------|--------|---------|----------|--------|--|
| ISO 2768-2 K                                       |        |       |         |          |           |            |                    |        |          |                    |            |        |         |          |        |  |
| Range  | 0-10   |       | >10-30  | >30-100  | >100-300  | >300-1000  | >1000-3000         | 0-100  | >100-300 | >300-1000          | >1000-3000 |        |         |          |        |  |
| Tolerance  | 0.05   |       | 0.1     | 0.2      | 0.4       | 0.6        | 0.8                | 0.4    | 0.6      | 0.8                | 1          | 0.2    |         |          |        |  |
| Default tolerance except material stock dimensions |        |       |         |          |           |            |                    |        |          |                    |            |        |         |          |        |  |
| ISO 2768-1 m Linear                                |        |       |         |          |           |            | Radii and Chamfers |        |          | Angular Dimensions |            |        |         |          |        |  |
| Range  | >0.5-6 | >6-30 | >30-120 | >120-400 | >400-1000 | >1000-2000 | >2000              | >0.5-3 | >3-6     | >6                 | 0-10       | >10-50 | >50-120 | >120-400 | >400   |  |
| Toler.   | ±0.1   | ±0.2  | ±0.3    | ±0.5     | ±0.8      | ±1.2       | ±2                 | ±0.2   | ±0.5     | ±1                 | ±1°        | ±0.5°  | ±0.32°  | ±0.16°   | ±0.08° |  |

[illegible]



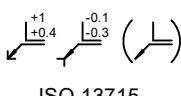


|  |        |        |         |          |           |            |                    |          |           |                    |      |        |         |          |        |  |
|--|--------|--------|---------|----------|-----------|------------|--------------------|----------|-----------|--------------------|------|--------|---------|----------|--------|--|
| ISO 2768-2 K                                       |        |        |         |          |           |            |                    |          |           |                    |      |        |         |          |        |  |
| Range  | 0-10   | >10-30 | >30-100 | >100-300 | >300-1000 | >1000-3000 | 0-100              | >100-300 | >300-1000 | >1000-3000         |      |        |         |          |        |  |
| Tolerance  | 0.05   | 0.1    | 0.2     | 0.4      | 0.6       | 0.8        | 0.4                | 0.6      | 0.8       | 1                  | 0.2  |        |         |          |        |  |
| Default tolerance except material stock dimensions |        |        |         |          |           |            |                    |          |           |                    |      |        |         |          |        |  |
| ISO 2768-1 m Linear                                |        |        |         |          |           |            | Radii and Chamfers |          |           | Angular Dimensions |      |        |         |          |        |  |
| Range  | >0.5-6 | >6-30  | >30-120 | >120-400 | >400-1000 | >1000-2000 | >2000              | >0.5-3   | >3-6      | >6                 | 0-10 | >10-50 | >50-120 | >120-400 | >400   |  |
| Toler.   | ±0.1   | ±0.2   | ±0.3    | ±0.5     | ±0.8      | ±1.2       | ±2                 | ±0.2     | ±0.5      | ±1                 | ±1°  | ±0.5°  | ±0.32°  | ±0.16°   | ±0.08° |  |

6

5

4

|   |             |                      |  |                  |  |   |  |  |       |        |  |
|---|-------------|----------------------|--|------------------|--|---|--|--|-------|--------|--|
|   |             |                      |  |                  |  |   |  |  |       |        |  |
| -   |             | PRIMA EMISSIONE      |  | FedericoZoppetti |  | 18/05/2022  |  |  |       |        |  |
| REV   | Description |                      |  | Designed         |  | Date  |  | Released   |       | Date   |  |
| <br><b>DieTronic</b><br>lubricating technology |             | Raw material: -      |  |                  |  | <br>FIRST ANGLE<br>PROJ. |  | <br>ISO 13715 |       | Weight |  |
|   |             | Surface treatment: - |  |                  |  |   |  |  |       | 209,89 |  |
|   |             | Heat treatment: -    |  |                  |  |   |  |  |       |        |  |
|   |             | Material             |  |                  |  | Scale   |  | Sheet size   | Sheet |        |  |
|   |             | -                    |  |                  |  | 1 : 3   |  | A2   | 3 / 3 |        |  |
|   |             | Description          |  |                  |  | Part number   |  |  |       | Rev.   |  |
|   |             | Plate 90x30 L=4770   |  |                  |  | S001149   |  |  |       | -      |  |

This document contains CONFIDENTIAL proprietary information which shall NOT be used, reproduced, or disclosed without prior written approval of Dietronic s.r.l. Notice ISO 16016.

This document contains CONFIDENTIAL proprietary information which shall NOT be used, reproduced, or disclosed without prior written approval of Dietronic s.r.l. Notice ISO 16016.